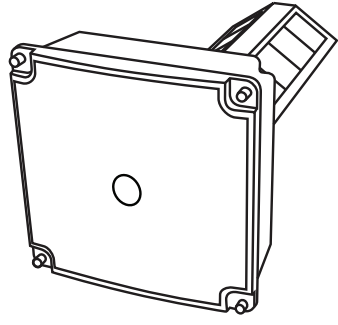


UVC CARBON

ADVANCED AIR TREATMENT SYSTEM

INSTALLATION GUIDE

UVC CARBON reduces odors (VOCs) and biological contaminants such as mold, bacteria, viruses, and allergens in indoor air. The system is installed in the duct work of the central air system. The award-winning design of Carbon UV uses a unique combination of UVC light and activated carbon cells to clean the air.



IMPORTANT!

- Only qualified technicians should install this product*
- Install in accordance with relevant building codes
- Read instructions carefully including safety warnings

WARNING!

PROTECT EYES FROM UV LIGHT
TURN OFF UNIT OR DISCONNECT
BEFORE SERVICING

*Installation of this product by anyone other than licensed HVAC or electrical contractors voids warranty.
CRBX-CPL-MAN 020124

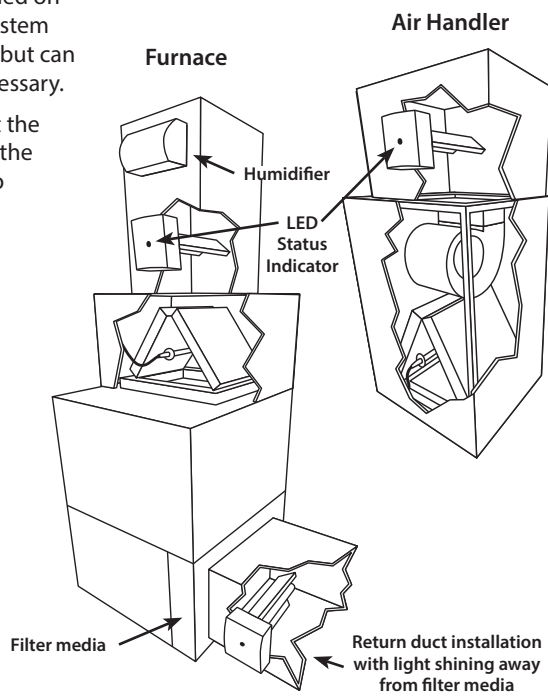
1 Installation Notes

The air treatment system is usually installed on the supply side duct just above the air system (upstream of a humidifier if there is one) but can also be installed on the return side if necessary.

The main unit should be oriented so that the air flows past the UV Light first then into the Matrix Element. Position the main unit so the UV light does not shine directly on non-uv-resistant materials (filters, humidifiers, flex duct, etc.). If possible orient it so UV light shines on the cooling coil.

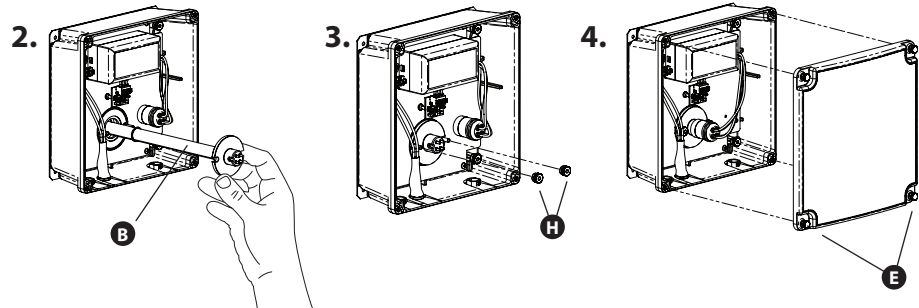
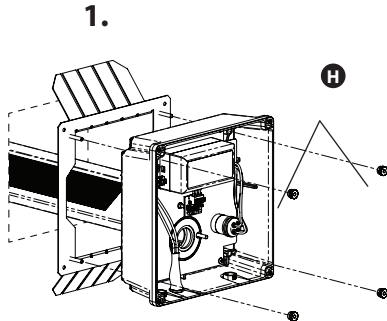
LED Status Indicator

Blue = Lamp status good
Red = Lamp status out



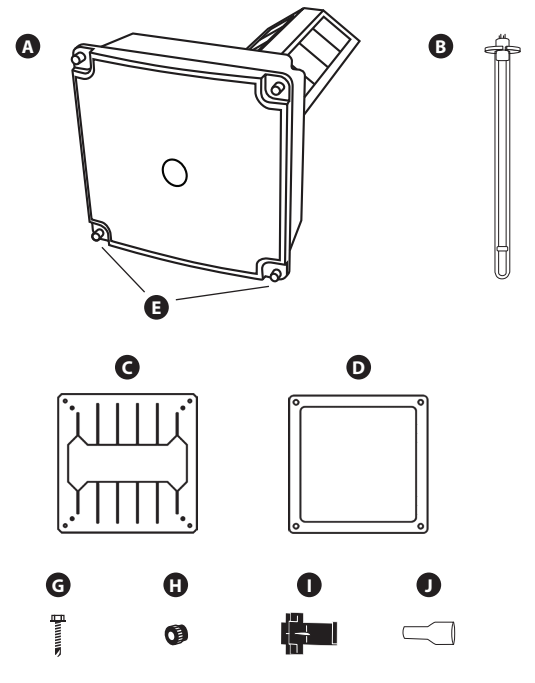
3 Attach Power Unit to Duct & Mount UV Lamp

1. Fit the Main Unit through hole in duct. If attaching directly to metal duct use 4 Self-tapping Screws **G**. If the Backing Plate is used fit the unit over the threaded posts and use 4 Quick Nuts **H** to secure it.
2. Insert UV Lamp.
3. Mount UV Lamp using 2 Quick Nuts **H** and attach lamp connector (be sure to align the four connector pins).
4. Rotate the cover so it is oriented correctly then attach with thumb screws.

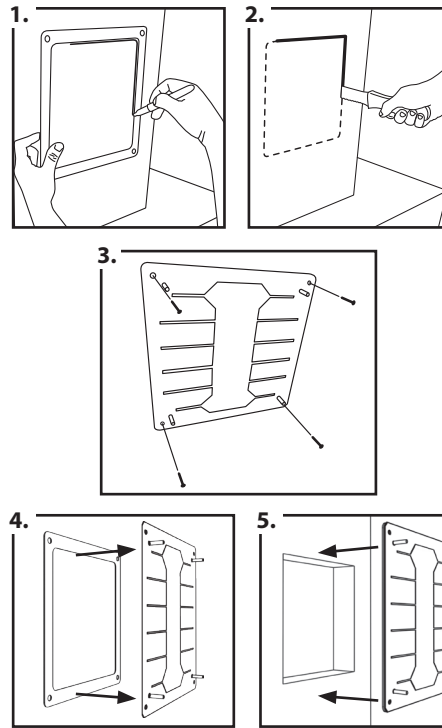


Parts List

- A** Main Unit
- B** UV Lamp (TUVL-315)
- C** Duct Plate
- D** Gasket
- E** Thumb Screws (on cover)
- F** Power Cord
- G** Self-tapping Screws
- H** Quick Nut (plastic)
- I** Tap-in Connector (ER/DER Models)
- J** Spade Connector (SI/DI Models)



2 Duct Mounting



1. Use gasket to trace cut-line onto duct.
2. Cut hole in sheet metal or duct board.

IMPORTANT! Remove and dispose of cut-out piece of material.

3. For sheet metal duct secure mounting plate with Self-tapping Screws **G**.*
4. Remove paper backing from one side of gasket and fix gasket to the back of the mounting plate.
5. Remove paper backing from back of gasket then fix mounting plate and gasket to the duct.
6. Bend mounting plate flanges around the edges of the hole to secure mounting plate. For duct board use tape on edges of mounting plate for air leaks and additional hold.

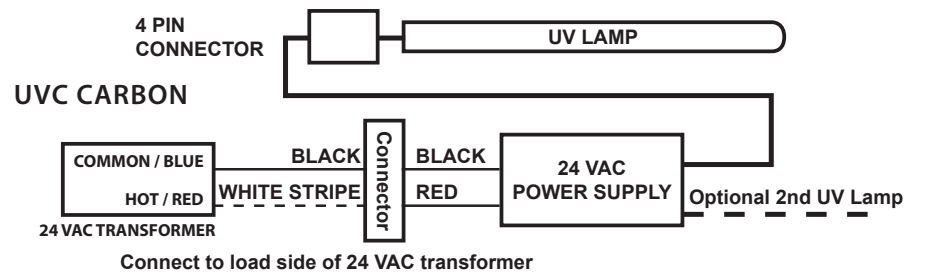
* If the backing plate can't be used install directly with 4 Self-tapping Screws **G**.

4 Connecting to Power

IMPORTANT

Turn off main power source before installation. Always use proper conduit fittings and terminations. Model information is printed on the Main Unit cover.

IMPORTANT! Must be wired to constant power - do not connect to blower relay.

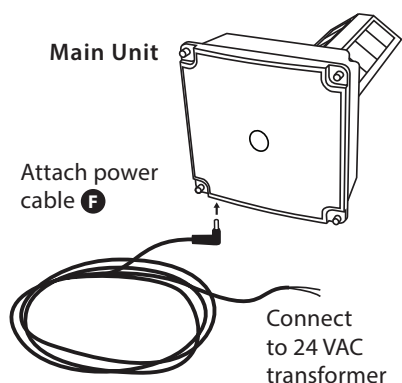


IMPORTANT!

Systems with high 24 VAC loads may require the installation of a separate 24 VAC transformer to power the UV light.

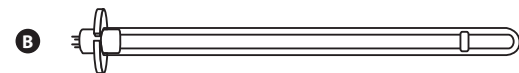
Always use a separate 24 VAC transformer with "communicating" air systems.

Draws 16 VA, may need to do load calculation: Volts under load X Amps under load.



5 Lamp Replacement

The UV lamp in this system (model TUVL-315) should be replaced every 2 years. Note: UV lamps will continue to emit visible light but lose germicidal effectiveness over time.



TUVL-315



CAUTION!

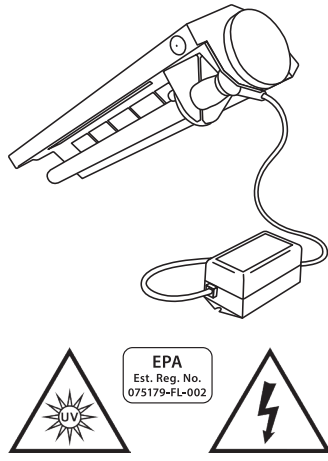
UV lamps contain small amounts of mercury - dispose of lamps in accordance with local environmental regulations. For more information visit www.lamprecycle.org

Note: Use of replacement UV lamps other than TUVL-315 voids warranty.

UVC CARBON MAGNET MOUNT ADVANCED AIR TREATMENT SYSTEM

INSTALLATION GUIDE

UVC CARBON is usually installed inside the central air handling system. Orient so the air flows past the UV light first before the carbon. Position the unit so the UV light does not shine directly on non-uv-resistant materials (filters, humidifiers, flex duct, etc.). Ideally the UV light shines on the coil.



IMPORTANT!

- Only qualified technicians should install this product*
- Install in accordance with relevant building codes
- Read instructions carefully including safety warnings

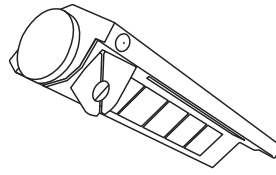
WARNING!
PROTECT EYES FROM UV LIGHT
TURN OFF UNIT OR DISCONNECT BEFORE SERVICING

*Installation of this product by anyone other than licensed HVAC or electrical contractors voids warranty.

Parts List

A

Main Unit



11" UVC Lamp

B

PART: TUVL-311 LIFE: 3 Years

Power Supply

C

ER Power Supply (low voltage)

Small Parts

D

Self-tapping Screws

E

Quick Nut (plastic)

F

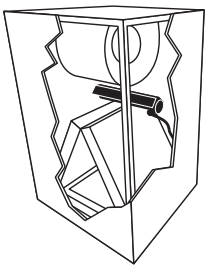
Spade Connector

1 Installation Notes

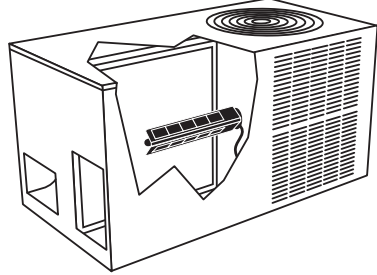
The UVC CARBON is usually installed inside the central air handling system. The unit should be oriented so that the air flows past the UV Light first then into the Matrix Element but a reversed installation is permitted if mounting on the return-side of the coil.

Typical installations include:

Air Handler

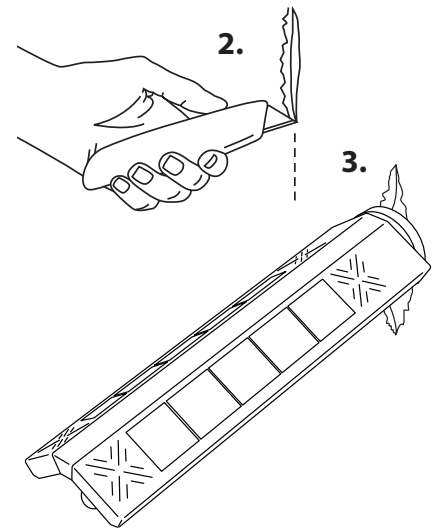
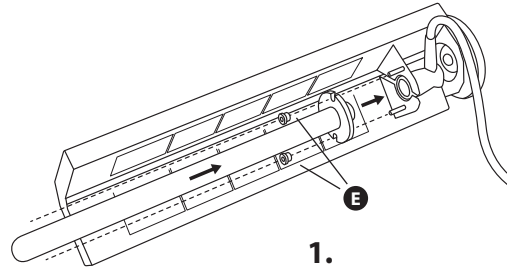


Package Unit



2 Mount Lamp

Mount the UV Lamp to the unit as shown using 2 quick nuts **E**.



3 Air Handler Interior Surface Installation

1. Determine the optimal position for placement of UVC CARBON inside the air system.
2. Use a utility knife to cut a slit in the insulation on the interior surface.
3. Place the magnetic mounting bracket directly on the metal surface or remove the magnet and hard-mount the bracket using the self-tapping screws provided. Use foil tape to close the cut in the insulation.

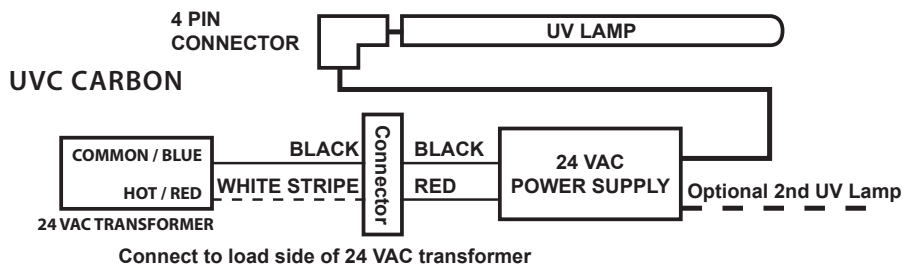
Important! do not install the mounting magnet within 12" of digital signal devices as this may cause interference.

4 Connecting to Power

IMPORTANT

Turn off main power source before installation. Always use proper conduit fittings and terminations.

IMPORTANT! Must be wired to constant power - do not connect to blower relay.



IMPORTANT!

Systems with high 24 VAC loads may require the installation of a separate 24 VAC transformer to power the UV light.

Always use a separate 24 VAC transformer with "communicating" air systems.

Draws 16 VA, may need to do load calculation: Volts under load X Amps under load.

5 Lamp Replacement

The UV lamp in UVC CARBON (model TUVL-311) should be replaced every 2 years. Note: UV lamps will continue to emit visible light but lose germicidal effectiveness over time.



CAUTION!

UV Lamps contain small amounts of mercury - dispose of lamps in accordance with local environmental regulations. For more information visit www.lamprecycle.org

Note: Use of replacement UV lamps other than TUVL-311 voids warranty.